

BOMERE HEATH AND DISTRICT NEWS

JUNE 2025



*The Parish Mag Fun Fundraiser
(Before the cakes were sold!)*



*In this issue:
The village fete is back!
Local News*

This edition (and previous ones) is also available online
at www.bomereheath.co.uk under 'Church, Groups and
Clubs'.

GHC

Graeme Harris Contractors (1969)

**LOCAL PROPERTY RENOVATION SPECIALISTS
SINCE 1969**

INTEGRITY - CONSISTENCY - HONESTY

Bespoke garage conversions (study, gym, teens room, extra bedroom/en suite, "my space" etc.)

Exciting bathrooms, kitchens (free design service), roofing, carpentry, guttering/UPVC, hand finished hardwood/other floorings, windows, doors, bi-folds, painting, lead work, patios, brickwork, contract plumbing and electrics.

**All "In House" : Projects Managed : Innovative Concepts
Great value for money - Staff Qualified up to H.N.C. Level
Family Business with over 7,700 satisfied clients.**

WE ... are friendly, honest and will not pressure you
WE ... will give you immediate attention
WE ... will guarantee you a first class job
WE ... will supply superb references
WE ... will talk to you anytime about any building problem

Telephone NOW - you have nothing to lose.

WHY PUT IT OFF?

Tel: 01939 290293 Mob: 07850 797130 / 07974 650424

The Hollies, Bomere Heath

Long time Member Federation of Master Builders.
Certified by the British Board of Agrément.

THE OLD STATION



The AA 4 Star Rated Bed and Breakfast Accommodation in Shrewsbury, Shropshire

**Evening Meals Available – Free Onsite Parking – Free Wi-Fi
– Dog Friendly- Free Breakfast**

The AA 4 star Old Station Guest House B&B is set in the heart of the Shropshire countryside less than 10 minutes drive via country roads from the historic county town of Shrewsbury, the central hub of Shropshire. It is situated adjacent to the Bomere Heath cricket ground with the village of Bomere Heath just a half a mile walk away with its local amenities of a small Co-op supermarket/newsagent, a post office, a hairdresser and a fish & chip shop. From here you can visit many places of interest in Shropshire, Cheshire and the Welsh Borders.

It is also located on the Shrewsbury to Oswestry bus route.

The Old Station Guest House B&B in Shrewsbury offer residents **FREE PARKING** for their large and small vehicles within the extensive grounds of The Old Station Guest House B&B. You could leave your vehicle in our car park and catch a bus from the end of the driveway.

This former railway station, built in 1847, has been lovingly renovated and enlarged to provide beautiful deluxe accommodation, having 6 unique en-suite guest bedrooms. Your chosen breakfasts and pre-ordered evening meals are cooked to order and are served in the dining room which was the original station waiting room and an extension onto the platform. The guest sitting room was originally the booking office. When the sun is shining you can also sit outside on the platform or one of the two patio areas.

From £80 per night and offering 10% discount from 3rd night.

THE OLD STATION

Leaton, Near Bomere Heath, Shropshire, SY4 3AP

Tel: 01939 290 905 **Mob:** 07714 068 305 / 07885 526 307

Web: www.theoldstationshrewsbury.co.uk

Email: langley.cm@gmail.com / enquiries@theoldstationshrewsbury.co.uk

Billcar Ltd

Walford Heath, Walford SY4 3AZ

- MOT
- Servicing
- Repairs
- Parts
- Remap



Contact **T** 01743 291740 **M** 07971 063469
engineering@billcar.co.uk www.billcar.biz

Now accepting new dental patients

Private general dentist practice

Located outside out of town centre

Free parking

Emergency pain management appointments

Dental membership From £22.50 pm

Direct Access Hygiene

FREE child appointments available

Argo Shrewsbury
Brassey Road
Old Potts Way
Shrewsbury
SY3 7FA
01743 362501

argo
DENTAL CLINICS

Sharna's Pet Care Service

Many years of experience
working with animals

- Canine First Responder
- Older Dogs are Catered for and Welcomed
- Home Sitting Service
- Holiday Cover
- Hospital Stays
- Work Commitments etc
- Five Star Care rating establishment



Walking/exercising all done
with love, care and attention.

Call: 07990 911 941

E: peanut1801@hotmail.co.uk

PC & LAPTOP REPAIRS COMPUTER PROBLEMS SOLVED

- ✓ Slow computers made faster
- ✓ New computers setup
- ✓ Internet, Email, WiFi
- ✓ Virus removal



- ✓ All hardware repaired
- ✓ All problems solved
- ✓ No callout fee
- ✓ Nothing to pay if he can't fix it

Reliable, friendly service, direct to your door
Free collection & return if not reparable on site
Free no obligation quotations provided
100% risk free - you only pay when we repair!

Call Dan on 01743 294555

 **Computer Repair Man**

"LOCAL TECHNICIANS YOU CAN TRUST!"

Style Care Hair

Bomere Heath, SY4 3NX

Just need a trim or a whole style
change? No problem call or pop
in to discuss.

Full Colours, Foils,
Perms, Highlights,
Blowdrys, Children Cuts
all available.

Tel: 01939 290664 /

Tuesday 9am - 5pm
Thursday 9am - 5pm
Friday 9am - 5pm
Saturday 8.30am - 1pm



Cut & Colour Baschurch

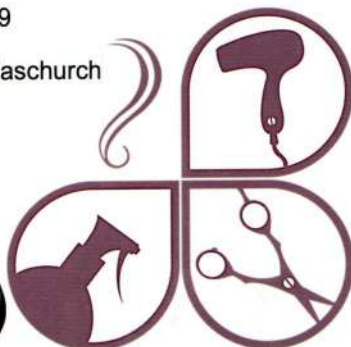
Hair, Nails, Beauty & Aesthetics



(01939) 809589



Cut & Colour Baschurch



Open Monday – Saturday @ Station Road, Baschurch, SY4 2BB



Heating Cooling Refrigeration

- Air Conditioning & Ventilation equipment
- Sales
- Service
- Installation
- FREE Quote/Survey

"To cool or not to cool ... that is the question."

We look forward to your call

MERRINGTON HALL FARM, BOMERE HEATH SHREWSBURY SY4 3QJ

t 01939 290234 m 07793 823887 e rob@racclimatecontrol.co.uk

Rob A Cooke

Contact us on 01743 276797 for an initial complimentary meeting and an opportunity for us to help organise your financial affairs.



Investment Management
Retirement Planning
Financial Planning
Tax and Estate Planning
Trustee Investments
Long Term Care
Business Planning

Crown Wealth Management Limited
Column House
7 London Road
Shrewsbury
SY2 6NN

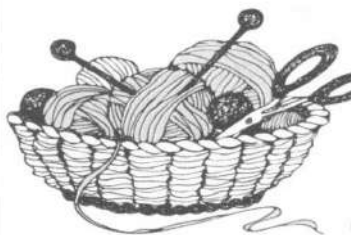
T 01743 276797
E info@crownmw.co.uk



Crown Wealth Management Limited is authorised and regulated by the Financial Conduct Authority.
Estate Planning and Trusts, in addition to some forms of tax planning, are not regulated by the Financial Conduct Authority.

www.crownmw.co.uk

Knitting Wools & Yarns



- Branded Fashion & Classic Qualities
- Dye Lot Ends
- Clearance From **£1.00** per Ball
- Patterns and Needles
- Knitting Accessories
- Haberdashery
- Craft For Christmas

Shop Now Open To The Public

Monday, Tuesday, Wednesday, Thursday and Friday
9.30am - 4.00pm

Focuscraft, 3 Merrington Business Park, Bomere Heath, SY4 3QJ

Tel: 01939 291848



**Designer Mother of the Bride /
Groom and Special Occasion Wear**
Stockists for Invitations by Veni & Veni Infantino

Beautiful Designer Hats to Match
(Buy Back Options also available)

We also stock John Charles Collection
We have a selection of pre-loved outfits for hire or sale

Prom & Ball Gowns

*Packages available to include Hair and Make Up
by very talented Professional*



www.thehiddengemshropshire.co.uk • 07971 182163

Adrian Huxley Oil Boiler Service & Repairs

**Est 20 Years
Qualified
Engineer**

Tel 01948 830657

Mob: 07890 013929

Shropshire Earwax Removal

Using microsuction - the quickest and
safest method of earwax removal
Mark Challiner PhD RHAD is an Accredited
Hearcare Professional with over 18 years
of experience

I can safely remove any earwax in your
own home or in clinic at Bicton
£60 one or both ears (not £60 an ear)
£25 'consultation only' fee if no earwax

**Book a clinic appointment online at
www.shropshire-earwaxremoval.co.uk**

Or phone or text 07411 223357

email: dr.markchalliner@gmail.com



www.hcpc-uk.org

Hut 4 Mutts

Professional Dog grooming Spa & Salon

Located in Leaton Knolls, Berwick Road, Shrewsbury



- Fully Qualified
- Grooming consultations & health checks
- Full Grooms / in-between brush & tidy-up
- Hydrobath & Brush
- Puppy grooming Intro Sessions
- Nail Clipping

For bookings & advice contact Natalie:

Telephone: 07891 665 541 E-mail: hut4mutts@gmail.com

Website: www.hut4mutts.co.uk

Dave Jenkins

Painter and decorator
Fully Insured Interior and Exterior

References on request

P.D.A. Approved

Telephone

01939 210 447

07740 424 287



JAMES COALES PROFESSIONAL TREE SERVICES

- Fully Insured
- All Aspects of Tree Surgery
- Free No Obligation Quotations



James Coales (cert.Arb)

Mob: 07834 525156

Home 01743 243030

E: jaycoales@hotmail.com

EST  1936

Frank Painter & Sons

FUNERAL DIRECTORS
Spring Gardens, Shrewsbury
01743 362024

— Incorporating —

Grindalls of Wem

FUNERAL DIRECTORS
Aston Street, Wem
01939 233903

4th Generation family owned
bereavement service, covering all areas
Day or Night

www.frankpainterandsons.co.uk

Golden Charter 
Funeral Plans Available



Bomere Heath and District News



June 2025

Thank you for your support

Welcome to the sunny June issue! Back in April, we held a 'Fun Fundraiser' for the parish mag. It was well-supported, and we are so grateful to all who helped organise, publicise and run it- you know who you are- thank you! We had a tombola, a café, lego, face-painting, a cake stall, quizzes, a plant stall (see the picture below) and more.

We're delighted to report that we raised a whopping £700- amazing! It has covered our shortfall this year and therefore put us in a much better financial position. Great news all round. We are hoping to make this an annual event (as it used to be in years gone by), so as time goes on we may also be able to look at introducing more colour pages to our magazine.

Aside from being a fundraiser, it was also really lovely to meet members of our community and to spend time together. The return of the Bomere Heath Village Fete in September will be another chance to do just this- do look out for the advert in this issue, and be sure to save the date!



Our next edition will be July-August 2025, with a copy deadline of 16th June.

Go to the directory at the back of our mag for all contact details.

CHURCH SERVICES

*Anyone is welcome at any of our services- we are here for you!
Each one lasts about an hour, and our service times are below:*



Date	Bomere Methodist Church the redbrick church at the top of the bank on Baschurch Road, SY4 3PN	Holy Trinity, Leaton the parish church- Berwick Road, SY4 3AP	The Mission Church the white building in the centre of the village- Shrewsbury Road, SY4 3PN	St John the Baptist, Albrighton the sandstone church opposite Albrighton Hall Hotel- SY4 3HP
1 st June	10.30am	10.45am	No service	9.15am
8 th June	10.30am	10.45am	9am	No service
15 th June	10.30am	10.45am	No service	9.15am
22 nd June	10.30am	10.45am	9am	No service
29 th June	No service	United service at Fitz, 10.30am, followed by lunch		

To find out more about the wider life of the local churches, go to our websites:

www.shropshireandmarches.org.uk

www.severnloopparishes.org.uk





The **Methodist** Church



THE CHURCH
OF ENGLAND

REGULAR HOSPITALITY

Coffee and Play Every Tuesday in term time, 8.45am- 10.15am The Mission Church	Coffee, Craft and Chat First Wednesday of the month, 10am-noon The Methodist Church	Tea and Cake Third Tuesday of the month, 2pm- 4pm The Methodist Church 	Stepping Out Café Last Wednesday of the month, 2.30pm-4pm The Mission Church 
--	---	--	--

From our local churches...

Looking back... and looking forward
Rev. Hannah Lins, Severn Loop Parishes

It was a joy to welcome people to our churches and churchyards as part of our recent *Festival of Hope*. We began with Forest Church at Shrawardine, and walked a mini-pilgrimage to Montford. Then, a week later, we enjoyed an amazing VE Day commemorative concert at Leaton Church, given by *The Ronnies*, who were absolutely brilliant. Finally, our festival culminated in a *Songs of Praise* service at Bicton, where we sang out nine hymns that had been chosen by the community, and rounded the whole thing off with cake. Thank you for your support, and we hope that our *Stations of the Resurrection* around the parishes were sources of comfort and hope for all who encountered them.



As we look forward to the summer and beyond, I'm delighted to say that our ministry team will be growing! David Latcham will be joining us at the end of June... as our Curate! You may remember that this is how I first landed here, eight years ago. It'll be a joy and a privilege to welcome Dave to the team, and the whole family to Severn Loop, as he serves his title with us. Dave has been studying for ordination at Trinity College Bristol, but has been doing so from a distance, having been based in Shrewsbury and on placement across the border in Oxon parish. He is married to Sarah, and they have three energetic young boys in Marty, Jago and Gilbert. Dave writes...



"I'm really looking forward to coming back to Severn Loop. I enjoyed my time dipping into the life and ministry of the parishes a couple of years back, and am excited to be able to learn and serve amongst you, and alongside Hannah and the team. Do be praying for me as I complete my academic training and prepare for all that ordained ministry will have to throw at me, and for our family as we all adjust to these changes. We look forward to meeting you all!"

We look forward to welcoming him as he begins his adventure here in Severn Loop Parishes. His welcome service will be at Fitz, 10.30am on 29th June, followed by lunch in Fitz Village Hall. All are warmly invited.

BOMERE HEATH YOUTH CLUB @ BOMERE HEATH VILLAGE HALL

BOMERE HEATH YOUTH CLUB NEEDS YOU

WE ARE RELAUNCHING THE YOUTH CLUB IN BOMERE HEATH IN THE SUMMER TERM.

WE WILL BE WORKING WITH YOUNG PEOPLE IN SCHOOL YEARS 5 AND 6.

WE NEED VOLUNTEERS TO RUN THE YOUTH CLUB

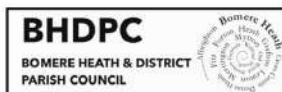
EVERY WEEK WE NEED TWO VOLUNTEERS TO HELP OUR TRAINED YOUTH WORKER OPEN THE CLUB

IF YOU CAN SPARE THURSDAY EVENINGS WE WOULD LOVE TO HEAR FROM YOU.

ALL VOLUNTEERS ARE OFFERED OUR SUPPORT AND CAN ACCESS TRAINING.

**WE ARE HAVING A VOLUNTEER INFORMATION EVENING
AT THE VILLAGE HALL ON
THURSDAY 8TH MAY FROM 6.30PM – 7.30PM.**

WE WOULD LOVE TO CHAT WITH YOU IF YOU ARE INTERESTED.



**For an informal chat please
contact Lee Overton on 07741
885025 or email lee@sya.org.uk**



Bomere Heath Village Hall

Our Post Office that runs from the Village Hall will be closing as of 11 June 2025. Hazel and Ruth who run the post offices have not made this decision lightly, and it has caused them some personal distress in having to take this decision and are leaving with heavy hearts. Unfortunately with the proposed increases to rent and other costs have made the Post Office in Trefonen and the outreach post offices unviable.

Ruth wanted us to pass on her thanks to all the customers who have supported and used the post office over the years. We are extremely sad to see the Post Office close and wish Ruth and her Mum Hazel all the very best for the future.

Bomere Heath will miss you and thank you for providing what has been an essential service to so many.

BHVH Dates for your diary

Paul Ray, Magician, Comedian and Unusualist: Saturday 14 June.

This promises to be a fun evening and a bit of a departure from recent Village Hall events. Come along and be prepared to be amazed! A recent review said:

“Amazing magic, mixed with hilarious comedy”

Doors open at 7:15pm and the show starts at 8:00pm. £8 per person, age 16+. As always, bring your own drinks and snacks and don't forget a bit of cash for the raffle and game of Heads & Tails. Tickets on sale on the BHVH Website.

Afternoon Bingo Sessions. 1.30pm the last Friday of the month. Continuing to go from strength to strength. Next dates are 27 June and 25 July.

Bomere Heath Village Fete & Family Fun Day: A group of volunteers are busy organising a fun packed day in September for the village. Details to follow.



Jennie Cooper (Chair BHVH)

The background of the poster features a sky with clouds, strings of bunting flags, and several large balloons. A dark rectangular box is centered in the upper half, containing the event title. Below this, a white banner with a double-lined border contains the date. The bottom half of the poster has a solid black background with white text and small decorative icons of a bow and a person.

BOMERE HEATH FETE AND FUN DAY

SATURDAY 13TH SEPT 2025

MOST ACTIVITIES 2-5PM (WITH SOME EARLIER STARTS)

 
**DOG SHOW, BAKE OFF, FOOD VENDORS,
GAMES, ENTERTAINMENT, MUSIC, RAFFLE
PLUS MUCH MORE!!!**



Bomere Heath & District Parish Council is on www.facebook.com/pg/BomereHeathCouncil



<http://www.bomereheath-pc.gov.uk>

BOMERE HEATH PARISH COUNCIL

There is always an open invite to members of the public, should you like to attend as a member of public you are very welcome, but spaces can be limited. If so, please contact the clerk to book a space.

Below are extracts from the Parish Council meetings at Bomere Village Hall on **Wednesday 14th May 2025**.

Shropshire Council



New County Councillor – at the start of May

our county councillor for Tern Lezley Picton stepped down and has taken a retirement. We would like to thank her for her years of service to this community and her diligent support to the Parish Council. Following the recent elections we now have a new councillor for our area Brendan Mallon.

There is a lot of work still to be done and the PC are looking forward to meeting Cllr Mallon soon.

Community News

Planning

Since our last update, we have reviewed and commented several submissions. Full details of planning, past & present can be found on the Shropshire Planning Portal.

Website & Emails

Our website address is now <http://www.bomereheath-pc.gov.uk>. The website is the same and in the same format, but the access has been updated to a more secure server.

Our email addresses will be changing. With new legislation, PC's are encouraged to have .gov emails and websites for enhanced security and so that emails can be easily identifiable. BHPC has gone through a process of updating the email address and very soon access will be

Clerk@bomereheath-pc.gov.uk

Chair@bomereheath-pc.gov.uk

This process will take place during May and the new email addresses expected to be live in June 2025

Fete

We are excited and pleased to be supporting the efforts by the local community to host a Fete in Bomere Heath this September. The PC has set aside some money in the budget to contribute and will aid the group where needed. Should you wish to contact or assist in the Fete, please email helenstiffin@yahoo.co.uk.

Neighbourhood Plan

MP Julia Buckley attended our April PC meeting and updated us on plans for Shropshire. The PC wanted to discuss the impact of planning changes at government level and we asked if it would be prudent to undertake a Neighbourhood Plan. This was strongly recommended and will give the community a voice on what it wants/needs and most importantly, where the community would accept development in the future.

In 2026 it will be 10 years since we did the Community Led Plan and the PC would like to return and build on this with a Neighbourhood plan. This will require engagement and assistance from the community, if you have had experience of wish to help, please do let us know.

Youth Club

Sadly, volunteer members were not consistent or frequent enough for us to sustain the group. There was a drive for volunteer support, but at this time the group has ceased. There is a desire to create a new group for years sixes, but the cost to have a fully managed group is over £10k per annum and the PC has agreed that this is not an acceptable sum of money for the number of children that would benefit.

We are always in review, but until further notice, the Youth club will likely not re-open.

Grants

Please remember that we do offer grants for community groups and assets, our next review is September, so if you need assistance, please visit the website and fill in the forms for consideration..

Should anyone like to join the PC we would welcome your interest.

The next meeting is to be held on **Wednesday 11th June 2025 at 7.30pm in Bomere Heath Village Hall.**

We will post the agenda for this meeting on the website nearer the time. If you wish to have a comment read aloud on an issue, please contact the Clerk in writing and give 5 working days' notice so it can be placed on an Agenda. clerk@bomereheath.co.uk

EXCERPTS FROM THE PRESCOTT SURGERY PATIENT NEWSLETTER

Premises Update- May/June 2025

Update regarding the surgery premises

The Rt. Honourable Helen Morgan MP visited the premises in February this year. As part of the discussions with Helen she stated she would take timely opportunity to promote and champion the practice in Parliament. **On Wednesday 23rd April, Helen discussed the practice as part of her parliamentary debate in the chamber at Westminster.** Below are her comments regarding the surgery...

"Across the country, there are thousands of GP surgeries that need urgent improvement if they are to provide the care that patients deserve. More than 2,000 hospital buildings across England were built before the foundation of the NHS in 1948, while the state of GP surgeries varies wildly. Many surgeries are simply no longer fit for purpose, having been built in the 1950s. Prescott surgery in my constituency, for example, has long been recognised as somewhere that needs to drastically increase in size because the population of the village has increased drastically itself. Despite the land and the community infrastructure levy funding being available, there is no sign of a new surgery being built. As the delay continues, the costs are rising and the challenge grows for both the council and the integrated care board, which are already under immense pressure to cut their costs".

Work continues - there is a further meeting with the Parish Council Chair, Andy Woodthorpe and the County Council representative booked for the end of May. The project is extensive and will take time to progress. When there is an appropriate update, Nick Storey and I will bring the update to patients via the newsletter and surgery website.

Jackie Jones, Chair - Prescott Surgery Patient Group

Dr Fiona Brodie Fraser and Dr Helen Whitworth

It is with sadness that we have to announce that Dr Fiona Brodie-Fraser and Dr Helen Whitworth will both be retiring later this year. Dr Brodie-Fraser will leave at the end of September and Dr Whitworth will leave at the end of August. I am sure that you will join us in giving them a BIG send off. Dr Brodie-Fraser and Dr Whitworth will be replaced by Dr Zoe Hook who joins us on 30th September. Many of you may remember Dr Hook who spent her final year of GP training here at Prescott Surgery between August 2020 and

July 2021. I know that you will make Dr Hook feel most welcome.

Nick Storey, Business Manager

.....

Pharmabox24

We know that funding will not be forthcoming in 2025/26 nor in 2026/27 for a new surgery building and we realise that we must do something to ease the car parking problem. As a result, **the partners have decided to purchase and install a new automated medicine collection point, which will be available 24/7**. This means that patients will be able to collect prescription medication at their convenience. Patients who are prescribed refrigerated medication or controlled drugs will not be able to use the new service.

The way that it works (in the simplest terms) is that the dispensing system will automatically send patients a text message when medication has been dispensed. The text message will contain a PIN code. The PIN is to be entered on a keypad on Pharmabox24 and the medication will drop into the collection point. Patients who pay for medication will be prompted to use the contactless payment pad before the medication is released. We expect the work to install the **Pharmabox24** to take place in late June or in early July.



Cricket Club News

The cricket season is well and truly underway, and what a start we've had - blue skies, warm sunshine, and plenty of action across all our teams! It's an incredibly exciting time for the club, with our three senior sides, midweek team, ladies' Softball team, and thriving junior sections ensuring the ground is a hive of activity.



Whether you're a player, supporter, or just looking for a friendly atmosphere, there's something for everyone at BHCC this summer.

Our popular junior programme is back in full swing, running for 10 weeks from its kick-off on May 9th. Every Friday evening, the BBQ will be fired up, and the bar will be open for thirsty spectators and players alike. We'd love to see more faces down at the ground - come and cheer on our teams during Saturday league matches, midweek fixtures, and most Sundays throughout the season. And if cricket isn't enough of a draw, our refreshed drinks selection might be! We're now serving Prahva lager, Alpacalypse IPA, Cold River Cider, and Strongbow Dark Fruits on draught, alongside a range of bottled beers, ales, wine, prosecco, gins and our brand-new Britvic soft drink dispenser.

A special thank you to our new head sponsor, **Cameron Homes**, whose generous support is helping to drive the club forward. We're also deeply grateful to **Battlefield 1403**, our longstanding former head sponsor, and to all our dedicated sponsors: **Salop Leisure, RAC Fridge Hire, Westbury Garages, Green Thumb, Olly Pope Optimum Performance, Veezu, Escom Wealth, and Electrical & Control Solutions Ltd.** Their backing makes a real difference and we are ever so grateful for each and every supporter of the club.

Finally, as a club at the heart of Bomere Heath, we know how much community spirit matters. Whether it's supporting local businesses, enjoying events at the village hall, heading down to the pub, or joining us at the cricket ground, these connections are what make our village special. Here's to a summer of great cricket, great company, and plenty of sunshine - we hope to see you down here soon!

Adam Vanner
Chairman
adam.vanner@outlook.com

	5	8		4				
	1					9		
3				6	7	1	5	
			9	1		6		
7	4			2			1	8
		6		3	4			
	3	5	2	9				1
		4					6	
				7		8	9	

SODUKA



Leaton Forest Firewood

Locally Grown, Traditionally Seasoned Firewood

Barrow Bags
Premium grade, £50
B grade, £45

Bulk Bags
Premium grade, £150.00
B grade, £125.00

Kindling £8.00

Free Local Delivery

To order;
Email; trees@letonforest.co.uk
or
order through our website;
www.letonforest.co.uk/firewood-log-sales/




Bomere Heath Gardening Club

Visit to New Hope Day Lilies

**Coach leaves Red Lion, Bomere
Heath at 6.00 p.m.**



You will need your name on the List

Members and Visitors Welcome



For further information

contact Anita on

07985.082172 or

01939.292969

BOMERE HEATH LADIES CLUB

Bomere Heath Ladies Club meets on the first Tuesday in the month at 7.30pm in the Red Room in the Village Hall (unless we are out on trips etc). We enjoy trips, speakers and quiz evenings amongst other events.

Why not join us - our annual subscriptions are £15 and £2 at each meeting attended.

Why not come along and give us a trial. Guests £4 per meeting

Tuesday 3rd June: US Civil War

Tuesday 1st July: Quiz and Strawberries and Cream

Tuesday 5th August: Day Trip to Liverpool

If you would like to join us, please call me,

Ann Misselbrook, 07776 099587



Carbon Earth

Compost

- **Peat-Free Compost**
- **Topsoil**
- **Bark Mulch**
- **Woodchip**

Locally produced in Shropshire. Loose and bagged
- delivery and collection available

www.carbonearth.co.uk

Call **01743 821226/ 07935293225**

or email products@carbonearth.co.uk

www.supportmycomputer.co.uk



New PCs & Laptops fully installed at home
Spyware Removal/Installation of Leading Edge
Spyware Prevention
Performance Tuning and Business PC Support
Upgrades and Automated Backup
Remote Support/Annual PC Health Check Also
Available
For low fixed Prices from £19.95

**PC/Laptop Stopped running or running slow or need a
replacement?**

Call Justin on (01691) 830822 or (07772) 596029



PAWFECT PARTNERS

Dog Walking, Drop Ins & Overnight Sitting

**Expert Pet
Care, Tailored
for You!**



**Discover what I
can do for You :**

**Dog Walking
Drop In Visits
Overnights
Pet Taxi**



**Fully Insured
DBS Checked
Pet First Aid qualified
Excellent References**

**Contact Darren on:
07939 969 310
pawfectpartners.co.uk**



coram
Beanstalk
creating readers

Can you help a child like
Ben learn to read?

We are Coram Beanstalk.
We create readers.

We are looking for volunteers!

- Can you spare a few hours a week to help a local primary school inspire children to become readers?
- By giving a few hours a week, in a local primary school, you could make a real difference to how well children do at school, and in life.
- We'll train you to set children up to succeed ... sharing, talking and having fun with books to help them understand the joy of reading.

Make a difference to a child's life, and to yours.

"I love my sessions
and feel like I am
having an impact on
the children's love of
reading and their
self-esteem."

98%

**WOULD RECOMMEND
US TO A FRIEND**

Find us online
corambeanstalk.org.uk
or call 020 7729 4087

Registered Charity No. 296454
(England and Wales)

Garry Roberts

Plumbing & Heating

☎ 07775775938

📍 Shrewsbury & Surrounding Areas

✉ garryroberts909@yahoo.com

G.R. PLUMBING & HEATING

Gas Safe - Energy Efficiency

Plumbing Installation &

Repair Services - Landlord

Safety Certification - 20+ Yrs
Experience

Reg:
227051
GAS
safe

Looking for helpful and reassuring financial advice?

We offer professional financial
planning to the mature and
retired market.

Get in touch for open and
honest advice.



Portland
Financial
Planning

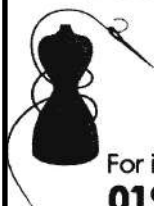
CALL 01743 365 813

EMAIL info@portland-fp.co.uk

VISIT www.portland-fp.co.uk

Portland Financial Planning Ltd.
are authorised and regulated
by the Financial Conduct Authority

DRESSMAKING AND ALTERATIONS



FROM MAKING
WEDDING DRESSES TO
SHORTENING CURTAINS
COMPETITIVE PRICES

For information call
01939 260892

2 RONNIE'S

**121 BELLE VUE RD
SHREWSBURY, SY3 7NJ**

For Repairs and Service to:-
HOTPOINT, HOOVER
And DYSON, NUMATIC,
ELECTROLUX
HOOVER VACUUM CLEANERS
Tel: (01743) 351763

Beauty Therapy by Jo Parker

IHBC (1986) ABT

Treatments in the comfort, privacy and
convenience of your own home.

**Facials, Massage, Waxing
Eyebrow shaping, lash & brow tinting**

Manicures & Pedicures

Indian Head Massage

Gift vouchers available

Mobile: 07941 033155

Yoga with Faith Page

Bomere Heath Village Hall
Monday evenings
6.00-7.15pm

**Improve your strength
and flexibility!**

£7.00/session*

Contact Faith for details:
07980 864161
faith@shrewsburyyoga.co.uk

(*course payable in advance)

Craig Jones Builder

For all your building needs

Patios • Walls • Concreting
Brickwork • Extensions
Alterations • Fencing

All Building Work Undertaken

For a free estimate

07764 459880

DENTURE WEARERS

**KEEP THESE
NUMBERS SAFE!**

ANDY

(Previously Leaton Dental)

07713 514168

01939 291211

For all your Denture
needs
and REPAIRS

Geraldine's Bridal and General Alterations



**For More Information
contact
07812 927310
gerrytomlins@hotmail.com**

BOMERE HEATH SUNSHINE PRE-SCHOOL

REGISTERED CHARITY 1041685

'A WELCOMING AND CREATIVE ENVIRONMENT'

RATED GOOD BY OFSTED OCT 2022



SESSIONS NOW AVAILABLE

Monday-Friday 9-3

We provide 24U, 15 and 30 hours funding

Extended hours available by arrangement

Contact: 07743 197988 or 07495 827078

Email: sunshinepreschool@live.co.uk

Website: sunshinepreschoolbomere.weebly.com



DSD Plumbing & Heating Ltd

Damien: 07949791029

Office: 01743 383859

E-Mail: dsdheatingltd@hotmail.co.uk

All works undertaken, no job too small.

Fully insured and qualified for over 15 years.

From tap washers to full central heating systems we cover all aspects of plumbing and heating.

Find us on:



DSDPlumbingHeating





Design, Print & Promotional

You think it
We design and print it!

- Flyers
- Banners
- Posters
- Brochures
- Business Cards
- Leaflets
- Newsletters
- Business Stationery
- Promotional Items
- Work Wear

Get in touch to find out more!

SJF Design, Print & Promotional

Unit 7, Leaton Forest Offices,
Leaton Knolls, Shrewsbury,
Shropshire, SY4 3HX

E: hello@sjfdesignandprint.co.uk **W:** www.sjfdesignandprint.co.uk

T: 01939 210261/01939 291645

M: 07581 193576



<https://www.facebook.com/SJFDesignPrintPromotional/>



**Farm Shop, Butchery, Deli, Café
& Battlefield Exhibition.**

We also do home deliveries.

Visit us at

www.battlefield1403.com

or call us on 01939 210 905



CAVELL OIL HEATING & PLUMBING SERVICES

07773 413 582 • 07790 037 395

Tony Porton • 3 Cavell Drive • Shrewsbury • SY3 8GD



All aspects of building work undertaken including extensions, new builds, bathrooms, wet rooms, aids and adaptations, renovations, kitchen fitting, plumbing, electrical work and groundwork

**With over 25 years experience
call Phil Lansdale on 01939 220356 or 07863 180079**

Haystacks, Meadowfield Court, High Street, Clive, Shrewsbury SY4 3JL

For a free No Obligation Quotation

ALAN POWELL



**Electrical
Contractor**

All types of Domestic,
Commercial and Agricultural
Installations and Repairs

Installation Testing
Fire Alarm Systems
Emergency Lighting

36 years experience
No job too small

Telephone:
01743 352379
Mobile:
07775 873 302

Email: richardblanchard171@btinternet.com

HORSE LIVERY DIY/PART Broughton Farm Harmer Hill

Family run arable farm

- ◇ Floodlit all weather schooling area
- ◇ Large stables in court yard setting
- ◇ All year grazing in safe paddocks
- ◇ Excellent hacking in fields with tracks.

Telephone:
01939 220 250
01939 220 131



M&M TOOL HIRE

**Tool & Machinery Hire
Machinery Repairs
Service & Parts
Calor Gas Sales**

Unit 12 Harlescott Barns, Harlescott Lane, Shrewsbury, SY1
3SZ (Behind Nixons Pet Store)

Opening Times

Mon -Fri 8.30am - 4pm
Saturday by Appointment

01939 290120

Find us on @M & M Tool Hire

matthew@m-landscaping.co.uk www.mandmtoolhire.co.uk

S.Ellis Tree Services

Tree cutting service and garden maintenance

Sion Ellis

Tree Surgeon

07493 182 855

Sundorne

Shrewsbury

sionellis14@gmail.com

<https://www.facebook.com/s.ellistreeservices>



SALOP AERIALS

TELEVISION AND STEREO
RADIO, SATELLITE AERIALS
SUPPLIED, FITTED, MOVED
AND REPAIRED

ALL WORK AND PARTS
GUARANTEED 12 MONTHS

For further information
tel Bomere Heath 01939 291808
mobile 07721 018942

Russell Hughes

Flat Roofing over 20 years experience

General Handyman • Tile/Slate repairs

Chimney releading/repainting

Ridge rebedding/pointing

References on request

Hedge Cutting, Lawn Mowing, Fencing, Painting

Just Ask! 01939 291 372 • 07948 546 417

Clare's Foot Care

Foot Health Practitioner

Clare Tunnadine

DipCFHP, MPSPract

**Specialist foot care treatment in the
comfort of your own home including**

Nails trimmed
Callus removal
Corn removal
Fungal nail treatment
Verrucae
Thick nail reduction
Other foot health problems

Please call Clare on

07951 497307

**to book an appointment or make
enquiries.**

Football Coaching



One-To-One Coaching

Group Football Sessions

Fully Insured

Enhanced DBS Checked

Previous Coaching Experience

Ages 5 and Upwards

Weekday and Weekend

Availability

Contact Number: 07960903406

Email:

ethanbroom2011@gmail.com

📍 School Road
Ruyton XI Towns
Shrewsbury
SY4 1JT
☎ 01939 261216



📍 High Ridge
Wem Road
Shawbury
SY4 4NW
☎ 01939 251180



ESTABLISHED SINCE 1991

INDEPENDENT PRACTICE

Green Hollow Veterinary Group

We provide our own 24 hour emergency service!

Caring for creatures great and small, from pets
to farm animals.

Double Glazing Repairs by Riverside UPVC Specialists Est (1996)

Solving issues with your windows and doors:

- - supply + fit replacement glass units
- - adjust locks for easier opening/closing
- - supply + fit replacement locks/hinges
- - supply + fit replacement handles

All work carried out by
Danny Carroll

Look us up on Google

Advanced City & Guilds Carpenter
Contact Dan: 07703 464999
Forton Heath, SY4 1HA

Ross Hines Chimney Sweeping

Clean Chimneys are safe chimneys
Brush and Vacuum – Leakage testing – Nests removed –Cows, Bird Guards and caps supplied and fitted. Open fire, multi fuel stoves, Aga, domestic and commercial.
Fully Insured with NFU, Certificates given. For a Fast, Friendly and Clean Service or just help and advice.

Call 01939 768319

24 The Wheatlands, Baschurch, Shropshire.
Sweep Safe Member: 307

A.D.T. Carpets

4 Morris Shopping Park, Wem
Tel: Wem (01939) 233661

NOW MAIN STOCKISTS FOR
RESTUS BEDS AND ACCESSORIES

14 High Street, Ellesmere
Tel: Ellesmere (01691) 624422

Home Choose • Flooring Fitted Free
Excellent Service • Free Estimate

STEVE LAWLEY

Painters & Decorators and Building Maintenance

**Family run business for 26 years and serving
32 years in the trade.**

Interior & Exterior

Contact us on 01743 363265:

01939 251025 or 07946 392397

E:stevelawleydecorators@msn.com

W:stevelawleydecorators.co.uk



A.T.E ELECTRICAL ENGINEERING LTD

INSTALL

MAINTAIN

REPAIR

Work we can do:

- Solar energy
- Car chargers
- Rewires
- Conservatory / Summer Houses
- Landlord certificates
- Indoor/ Outdoor lighting
- General electrical work
- Extensions
- Fusebox upgrades

AND MUCH MORE....

About Us:

We are a fully competent team with 50 years plus experience.

We are fast and reliable with competitive pricing, carrying out work to the highest standards to make sure our customers are getting what they deserve.

Offering **FREE** quotations and estimates

Find us on facebook and instagram or contact us via 07775 300214

Shire Stairlifts

SHROPSHIRE BASED STAIRLIFT COMPANY

**INSTALLATION
SERVICE & REPAIR
FREE NO OBLIGATION QUOTATION
2yr warranty on new stairlifts**

**Contact us for details
07725 337918**

**Crown House, Lancaster Rd
Shrewsbury, SY1 3LG
Email: info@shirestairlifts.co.uk**

www.shirestairlifts.co.uk

We're the **Which?**
Insurance Brand
of the Year for the
second year running



Whether it's for your car, home, farm or business, for quality insurance you can rely on, join us today.

Contact NFU Mutual Shrewsbury
on **01743 344 743**



S L Latter & M D Shepherd is an appointed representative of The National Farmers Union Mutual Insurance Society Limited (No. 111982). Registered in England. Registered Office: Tiddington Road, Stratford-upon-Avon, Warwickshire, CV37 7BJ.



Church Road Garage (Baschurch) Limited
7 Church Road, Baschurch, SY4 2EF



The friendly team at Church Road Garage (Baschurch) Ltd offer a full range of motoring services for you and your vehicles including:

- MOT Testing - Cars & Light Vans
- Tyres - Competitive prices! Tracking, Punctures, Balancing
- Servicing to manufacturers schedules with OE quality parts
- Air Conditioning - Service & Repair
- Diagnostics using the latest equipment
- Repairs: Brakes, Clutches, Gearboxes, Suspension, Lights, Steering, Exhausts, Batteries etc.

Fully skilled, helpful and friendly team, with a service second to none! Advice is always free!

Phone: 01939 260702

Email: info@churchroadgarage.com

Website: www.churchroadgarage.com

IAN WILLIAMS **Painter and Decorator**



No Job Too Small

Tel: 07939 941922

Certified
Sharpeners



professional
sharpening services

LOCAL PROFESSIONAL SHARPENING OF
Knives: Scissors: Clipper Blades: Garden Tools:
Garden Power Tools: Wood Working Tools:
Woodturning Gouges

Riddles

Back Lane

Bomere Heath

SY4 3PL

07517 434947

P. W. CHURMS OPTICIANS

YOUR LOCAL INDEPENDENT OPTICIANS



01939 261111

THE OLD POST OFFICE, STATION RD, BASCHURCH, SY4 2BB

baschurch@pwchurmsopticians.co.uk



FREE EYE TEST & 15% OFF YOUR FIRST ORDER FOR ALL NEW PATIENTS

PROVIDING QUALITY **NHS** AND PRIVATE EYECARE TO BASCHURCH AND THE SURROUNDING COMMUNITY

Ray-Ban

NIKE

TOM FORD

Paul Smith

Flexon

Joules

TED BAKER

Calvin Klein

PAUL COSTELLOE

POLICE

CAROLINA HERRERA



OFFICIAL ESSILOR
EXPERT OPTICIAN

#1 in spectacle lenses worldwide



RED LION

BOMERE HEATH



Discover the heart of your community at
The Red Lion – where great beer, good company,
and a *warm welcome* await you every day!



Whether you're catching up with friends, celebrating a special occasion, or simply unwinding with a pint, our friendly atmosphere makes every visit special.



THE **NEARER**
YOU LIVE
TO A **JOULE'S**
HOUSE THE
BETTER!

**ENJOY A PINT OF
CASK ALE ON US**

AT THE **RED LION** BOMERE HEATH



Ts & Cs offer only valid on Joule's cask beer, the landlord has the right to remove this promotion at any time.

GWR LTD

FENCING, AGRICULTURAL & TIMBER SUPPLIES

FENCE PANELS, CONCRETE POSTS AND GRAVEL BOARDS

SAWN TIMBER, DECKING, AND NEW RAILWAY SLEEPERS

SCREWS, NAILS, STAPLES AND FITTINGS.

KILN DRIED HARDWOOD LOGS

BEST LOGS IN SHROPSHIRE



OPENING HOURS

8am-5pm Mon-Fri. 8am-1pm Sat

CALL US ON 01939 234880

EMAIL INFO@GWRLTD.CO.UK

WWW.GWRLTD.CO.UK

FACEBOOK [@GWRWOODFUEL](https://www.facebook.com/GWRWOODFUEL) [@GWRLTD.CO.UK](https://www.facebook.com/GWRLTD.CO.UK)

GWR LTD – Is a family owned & run business, supplying a complete range of fencing and wood fuel.

DELIVERY SERVICE AVAILABLE

Adrian Huxley Oil Boiler Service and Repairs- 8
 ADT Carpets- 33
 Alan Powell Electrical Contractor- 31
 Argo Dental Clinics—5
 ATE Electrical Engineering— 34
 Battlefield 1403- 29
 Beauty Therapy by Jo Parker- 27
 Beestons Property Services- 30
 Billcar Ltd- 4
 Bomere Heath Sunshine Preschool- 28
 Carbon Earth Compost- 25
 Cavell Oil Heating & Plumbing Services-30
 Certified Sharpeners— 36
 Church Road Garage Baschurch- 36
 Clare's Footcare- 32
 Computer Repair Man- 5
 Craig Jones- 27
 Crown Wealth Management- 7
 Cut and Colour Baschurch- 6
 Dave Jenkins Painter and Decorator- 9
 Denture Repairs- 27
 Dress Making and Alterations- 27
 DSD Plumbing and Heating- 28
 EB Coaching (football)- 32
 Enable All Tutoring- 36
 Frank Painter and Sons Funeral Directors- 9
 Garry Roberts Plumbing and Heating- 26
 Geraldine's Bridal and Alterations- 28
 Graeme Harris Contractors- 2
 Green Hollow Veterinary Group- 33
 GWR Ltd Timber Supplies- 39
 Horse Livery Broughton Farm- 31
 Huts for Mutts- 8
 Ian Williams Painter and Decorator- 36
 James Coales Professional Tree Services- 9
 Joules Brewery (Red Lion Pub)- 38
 Knitting Wools and Yarns- 7
 Leaton Knolls Firewood and Kindling— 21
 M&M Tool Hire- 31
 NFU Mutual- 35
 Portland Financial Planning- 26
 PW Churms Opticians- 37
 RAC Climate Control Ltd- 6
 Riverside UPVC- 33
 Ross Hines Chimney Sweeping- 33
 Russell Hughes Roofer and Handyman- 32
 Salop Aerials- 32
 S. Ellis Tree Services- 32
 Sharna's Pet Care Service- 5
 Shire Stairlifts- 35
 Shropshire Earwax Removal- 8
 SJF Design and Print- 29
 Steve Lawley Painters and Decorators- 34
 Style Care Hair- 5
 Support My Computer- 25
 The Hidden Gem- 8
 The Old Station Bed and Breakfast- 3
 The Pet Run Dog Walking- 36
 Two Ronnie's- 27
 Yoga with Faith Page- 27



Bomere Heath and District News



*Is a joint publication managed by the
Methodist and Anglican churches of
Bomere Heath, Leaton and Albrighton
with Battlefield.*

Chairperson: Hannah Lins
revhannahlins@gmail.com
 Secretary: Philippa Herbert
herbertphilippa66@gmail.com
 Treasurer: Caroline Watson
caroline.lawson@btconnect.com
 General enquiries:
bomeremag@gmail.com

Church Contacts: Bomere Methodist Church:

bomereheathmethod-ist@gmail.com



Leaton and Mission Church Churchwardens:

Pat Hall: 01939 290637
 Peter Leddington:
p.leddington@outlook.com

Albrighton with Battlefield Churchwardens:

David Jagger: 07943 417628
 Claire Kirk: 01939 291023

Priest in Charge:

Hannah Lins:
revhannahlins@gmail.com
 07736 012011

Directory of Advertisers

All advertisers are listed to the left,
 along with the page you'll find their
 details on.



Clerk to Council-

the Parish

Mrs. S. Horton- 01939 290200

Village Hall Booking Secretary-
secretary@bhvh.co.uk
 or 07747 472199